



Data Highlights 2008-2009

**Presented to KCMHSAS Board Members
August 24th, 2009**

**Becca Sanders M.S.W., Ph.D.
Program Evaluator**

Thanks to Dr. Carolyn Sullins and the WMU team for all their behind the scenes hard work!



Who are we Serving?

Intake Demographics of Kalamazoo Wraps Participating Youth (n=224)*	
Gender	
Male	70.5%
Female	29.5%
Categorical Age	
4 to 6 years	1.8%
7 to 11 years	30.8%
12 to 14 years	31.7%
15 to 17 years	35.7%
Race/ Ethnicity	
White	42.1%
Black or African-American	37.6%
Multi-racial	11.3%
Of Hispanic Origin	8.1%
American Indian or Alaska Native	0.5%

• In 2008, the poverty threshold for a family of 4 living in the United States was \$21, 200.

• 63.6% of KWraps caregivers reported a family income level of less than \$20,000 per year (n=177).

*Data used in this presentation downloaded first week of August, 2009



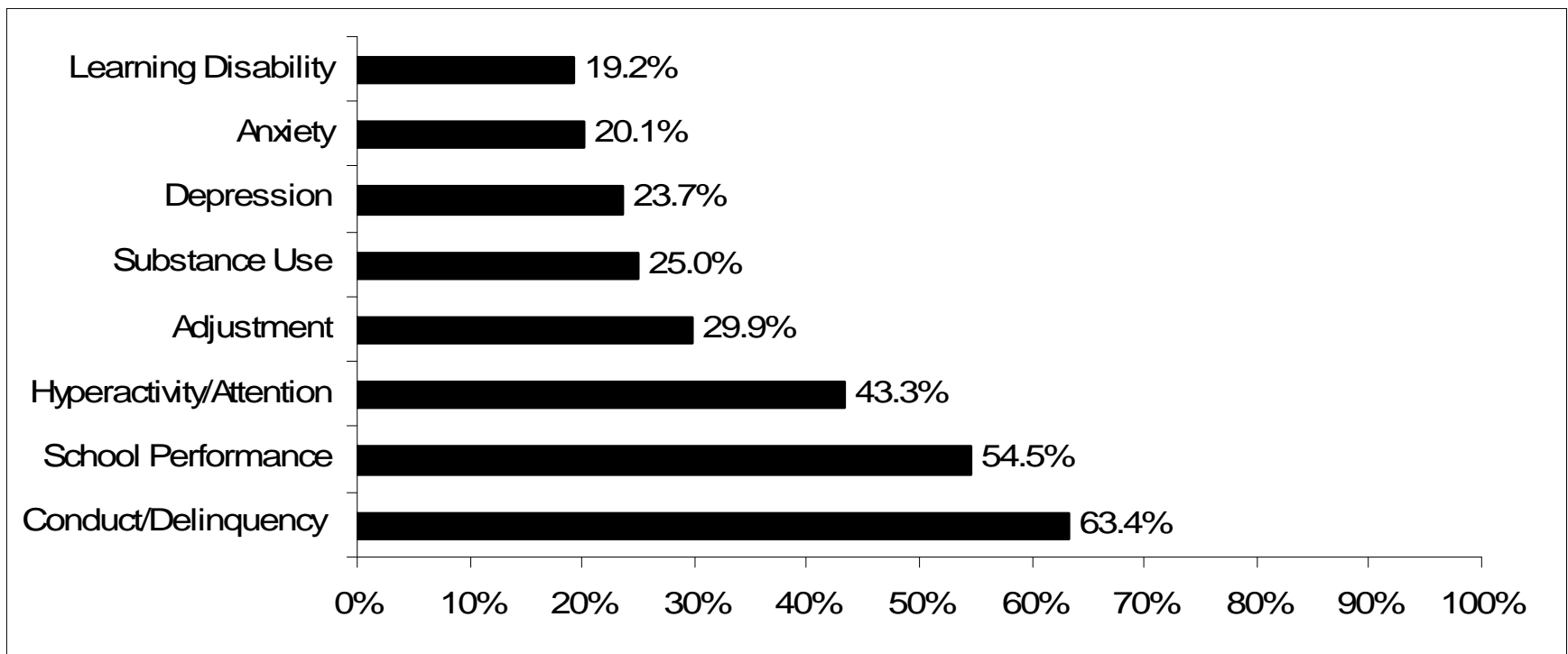
Who are we Serving?

Has the child ever . . .	
Witnessed domestic violence? (n = 173)	49.1%
Lived with someone who was depressed? (n = 173)	72.3%
Lived with someone who had a mental illness, other than depression? (n = 172)	42.4%
Lived with someone who was convicted of a crime? (n = 173)	56.6%
Lived with someone who had a substance abuse problem? (n = 173)	53.2%
Been physically abused? (n = 174)	25.3%
Been sexually abused? (n = 167)	22.8%
Run away? (n = 175)	41.1%
Had substance abuse problems? (n = 172)	32.0%
Attempted suicide? (n = 175)	17.7%



What Led to the Referral?

Top Presenting Problems of Youth at Time of Referral to Kalamazoo Wraps (n=224)





Strain of Caregivers Decreased over Time

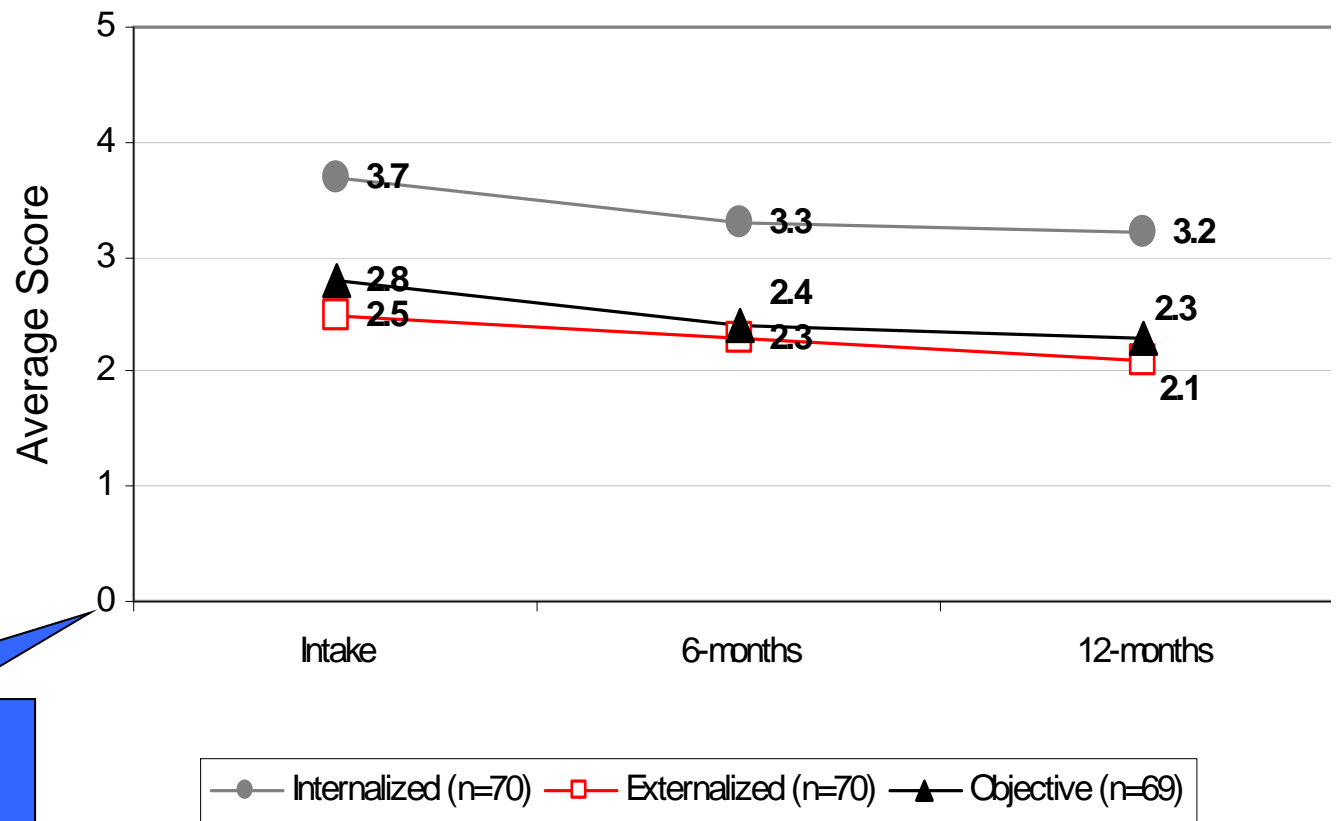
Internal Strain refers to negative feelings like worry, guilt, and fatigue.

External Strain refers to negative feelings about the child being cared for like anger, resentment, or embarrassment.

Objective Strain refers to observable daily interruptions as a result of caring for a child with emotional and behavioral challenges.

Higher average scores on the scale indicate higher levels of strain experienced by the caregiver.

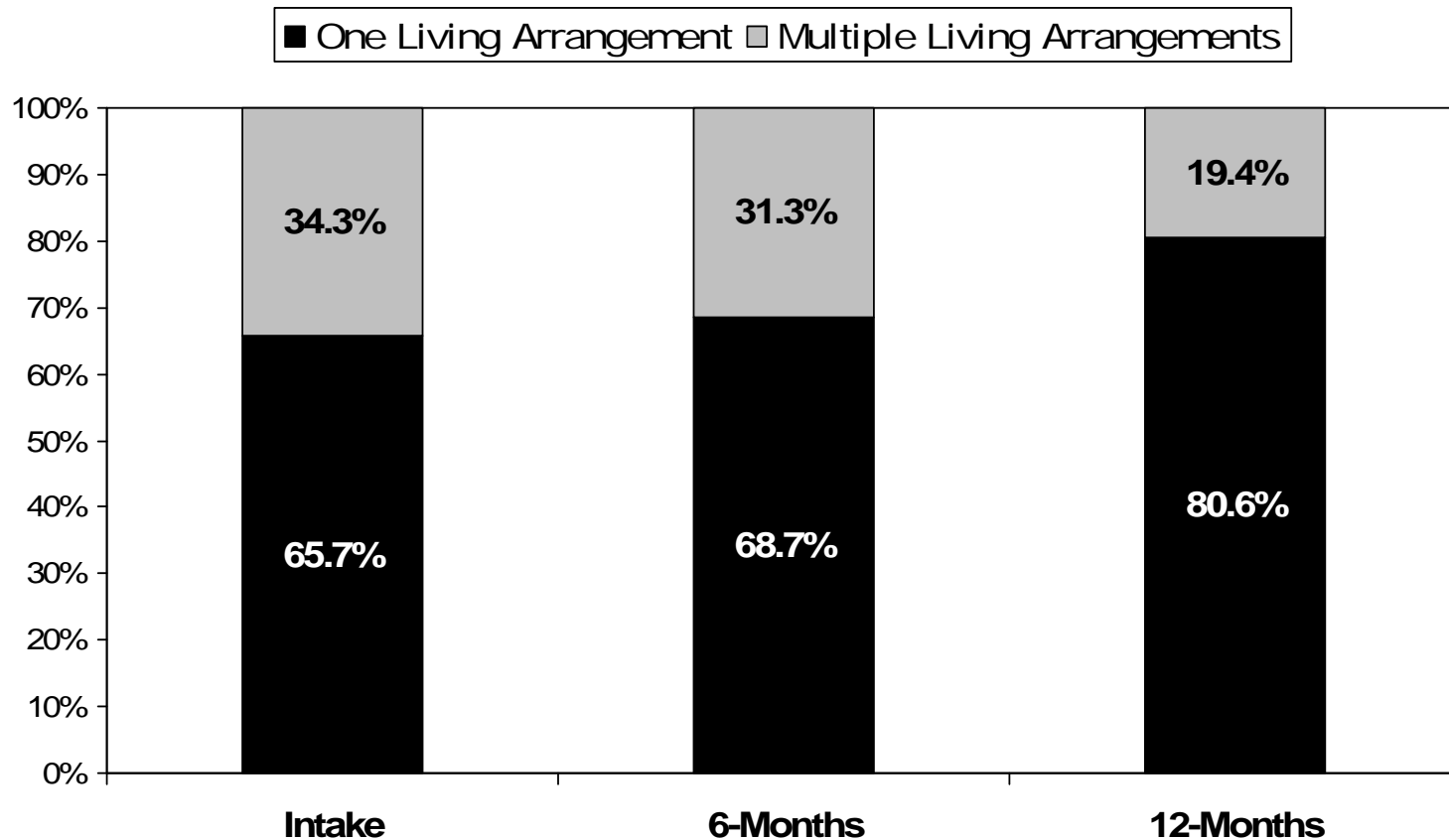
Kalamazoo Wraps Caregiver Strain Over Time
(n=70)





Living Situations of Youth Became More Stable

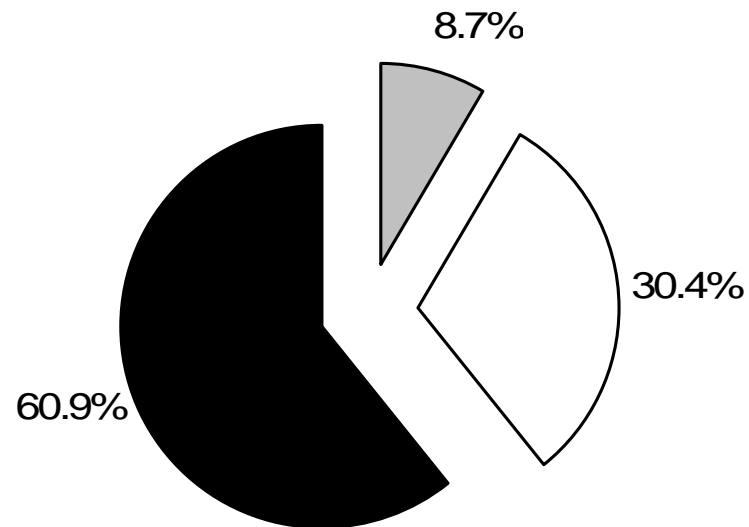
Living Situation Stability and Instability of Kalamazoo Wraps Youth Over Time (n=67)





School Performance (i.e. Grades) Improved

Changes in School Performance for Kalamazoo Wraps Youth from Intake to 12-months (n=46)



■ Deterioration

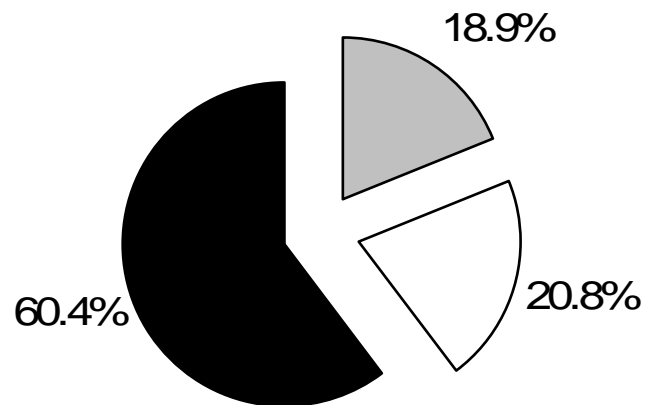
□ No Change

■ Improvement



School Attendance Improved

Changes in School Attendance for Kalamazoo Wraps Youth from Intake to 12-Months (n=53)

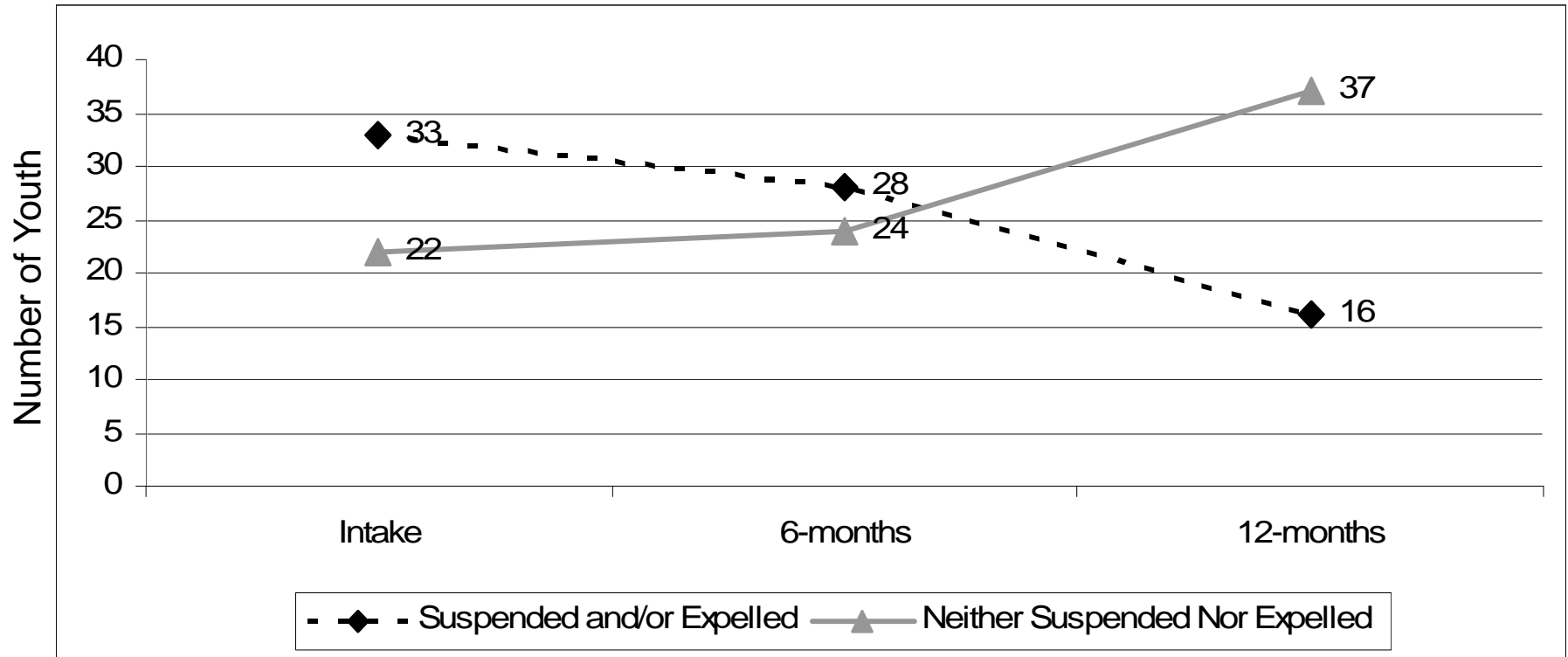


□ Deterioration □ No Change ■ Improvement



Youth Behavior at School Improved

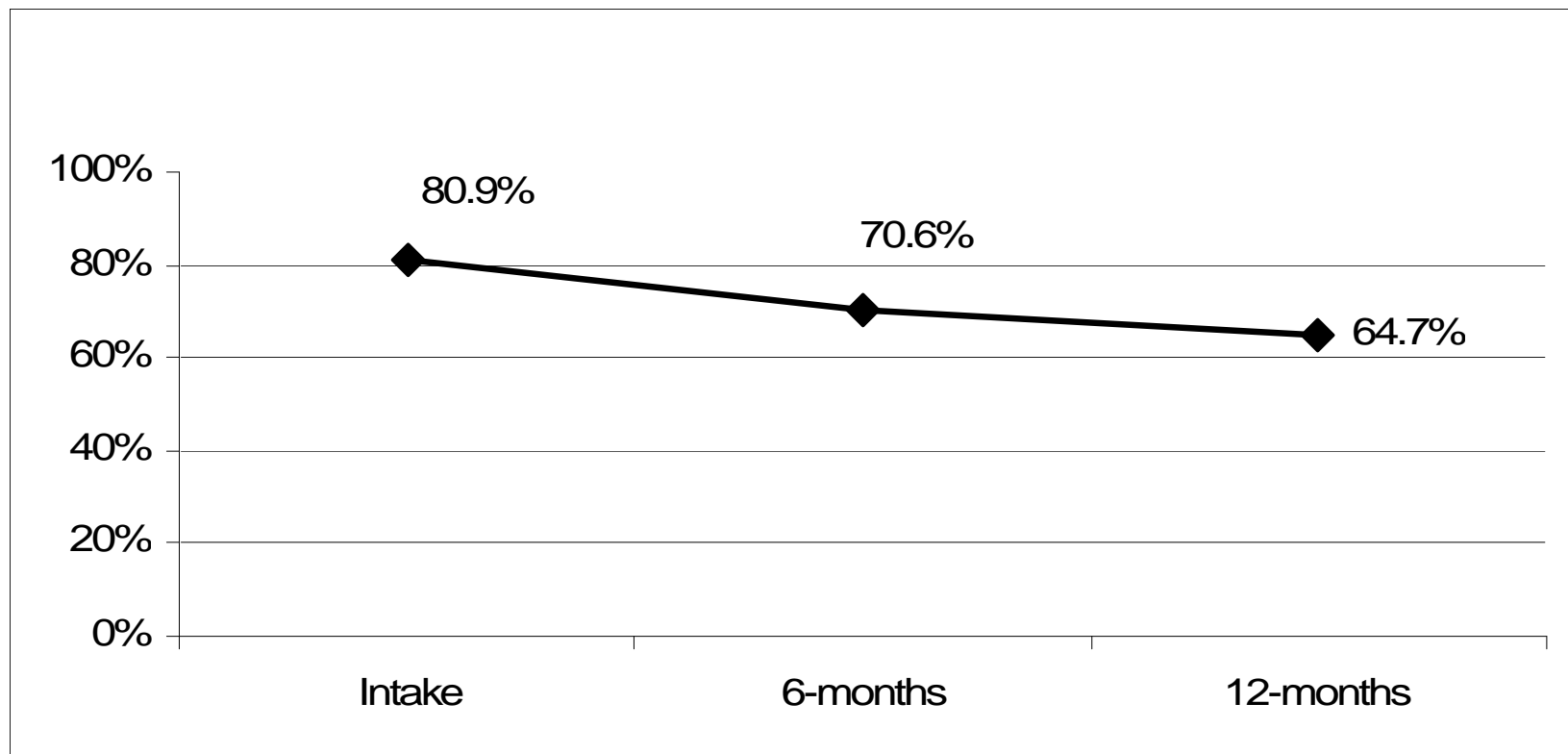
Suspension and Expulsion of Kalamazoo Wraps Youth Over Time (n=61)





Youth Functioning Improved

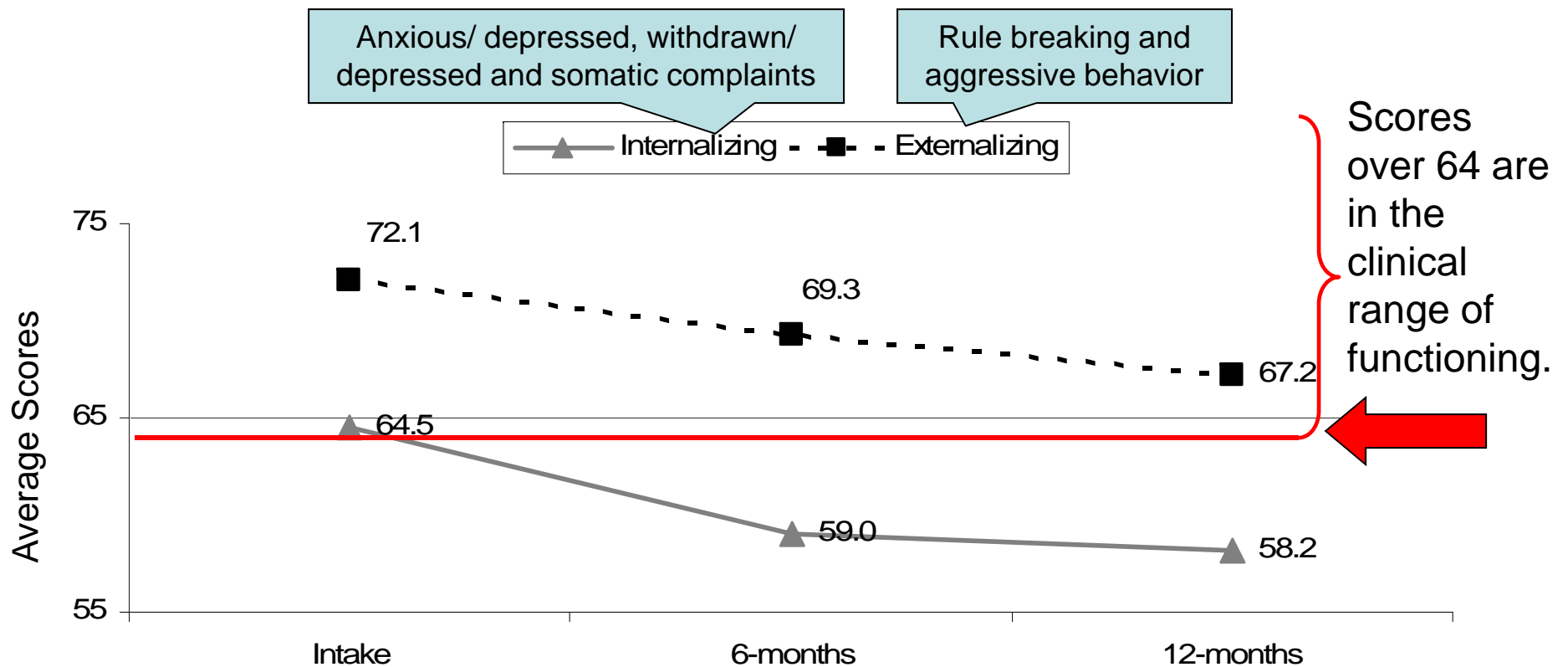
Total Impairment Score from the *Columbia Impairment Scale* Over Time: Percent of Youth Scoring in the Clinical Range of Functioning (n=68)





Youth Functioning Improved

Internalizing and Externalizing Subscale Scores from the *Child Behavior Checklist 6-18* (CBCL 6-18) Over Time: Average Scores (n=69)





Youth Functioning Improved

Outcomes for Youth Receiving KCMHSAS Homebased and Wraparound Services
Youth With *Child and Adolescent Functional Assessment Scale (CAFAS)* Intake and Exit Data, October 2007-March 2009, (n=63)

